



ELIT KS-KLEM-V2A-RUND

KS connector (clamping screw) V2A for round

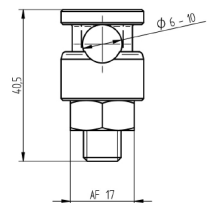
KS connector (clamping screw) V2A for conductor Ø6-10mm

Technical description

KS connector (clamping screw) with M10 nut made of stainless steel, V2A, according to EN 62561-1 for use for connection to round conductors Ø6-10mm.

Advantages:

KS connector (clamping screw) with M10 nut made of stainless steel, V2A
For use for connecting round conductors Ø6-10mm



Product name/ Art.nr/ GTIN	ELIT KS-KLEM-V2A-RUND/ 40150232/ 7070810038961
According to:	EN62561-1
Thread connection	External thread
Thread type	Metric
Material	Other
Material quality	Stainless steel 304 (V2A)
Surface protection	Other
Colour	Other
Inner diameter	10 Millimetre